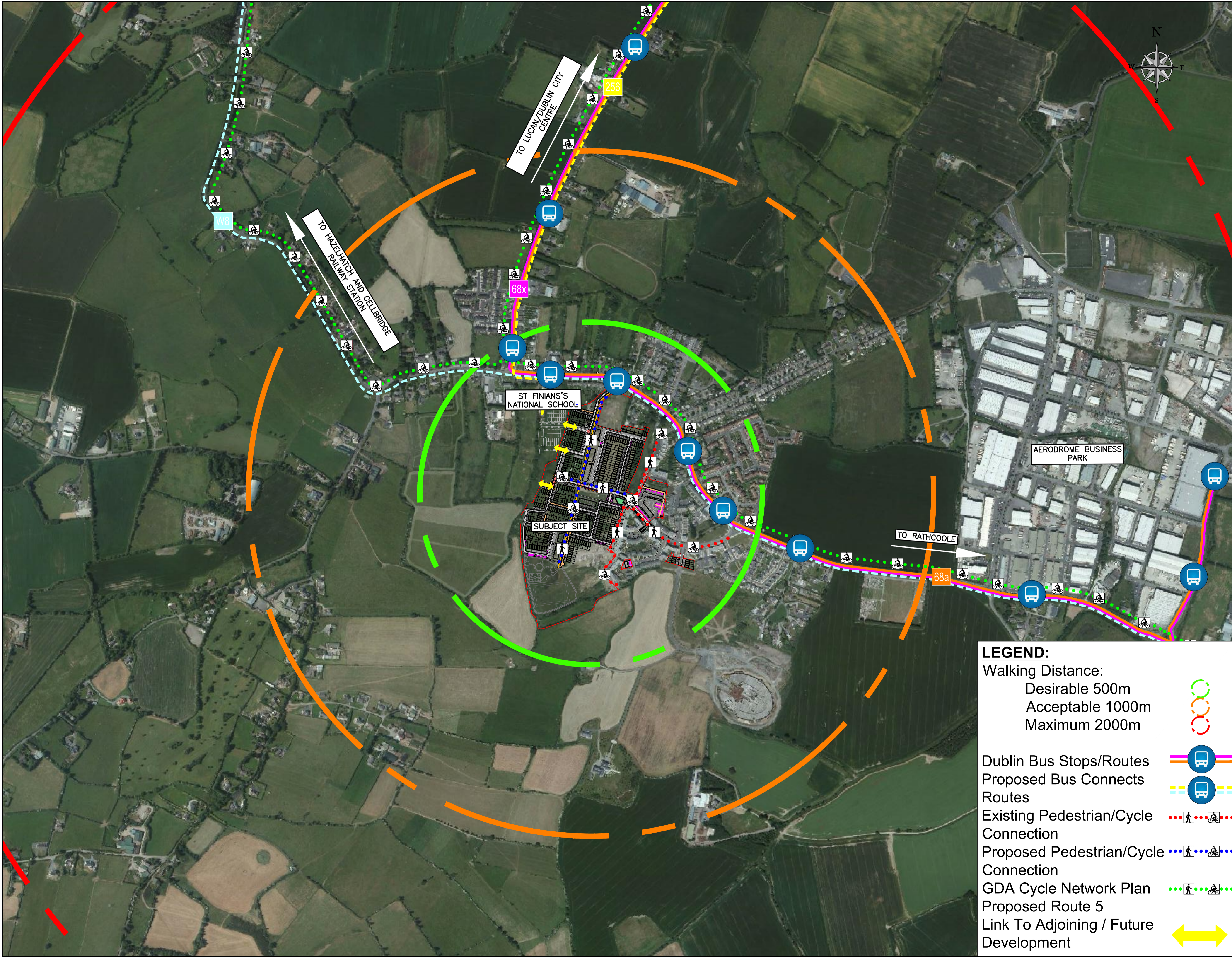


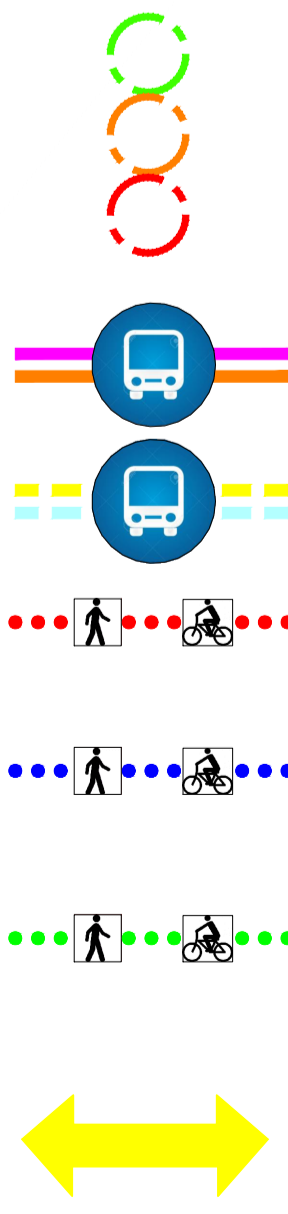
NOTES:



LEGEND:

Walking Distance:
 Desirable 500m
 Acceptable 1000m
 Maximum 2000m

- Dublin Bus Stops/Routes
- Proposed Bus Connects Routes
- Existing Pedestrian/Cycle Connection
- Proposed Pedestrian/Cycle Connection
- GDA Cycle Network Plan
- Proposed Route 5
- Link To Adjoining / Future Development



REV	DATE	DESCRIPTION	PJC	NCG
A	03/09/19	STAGE 3 SUBMISSION TO ABP		

PLANNING

DESIGNED	NCG	PREPARED	PJC
DATE	JUNE 2019	CHECKED	DJR

DBFL
 DUBLIN OFFICE: Ormond House, Upper Ormond Quay, Dublin 7, Ireland. PHONE: +353 1 400 4000 FAX: +353 1 400 4050
 WATERFORD OFFICE: Unit 2, The Chandlery, 1-2 O'Connell Street, Waterford, Ireland. PHONE: +353 51 329 5200 FAX: +353 51 844 913
 DBFL Consulting Engineers EMAIL: info@dbfl.ie URL: www.dbfl.ie

PROJECT
LANDS AT NEWCASTLE, SOUTH DUBLIN

DRG. TITLE
TRANSPORTATION LINKAGES PLAN

ARCHITECT
MOLA

SCALE	1:5000 @A1	FILE REF.	170024-9020
DRG. NO.	170024-9020		A